

SAMPSON COMMUNITY COLLEGE

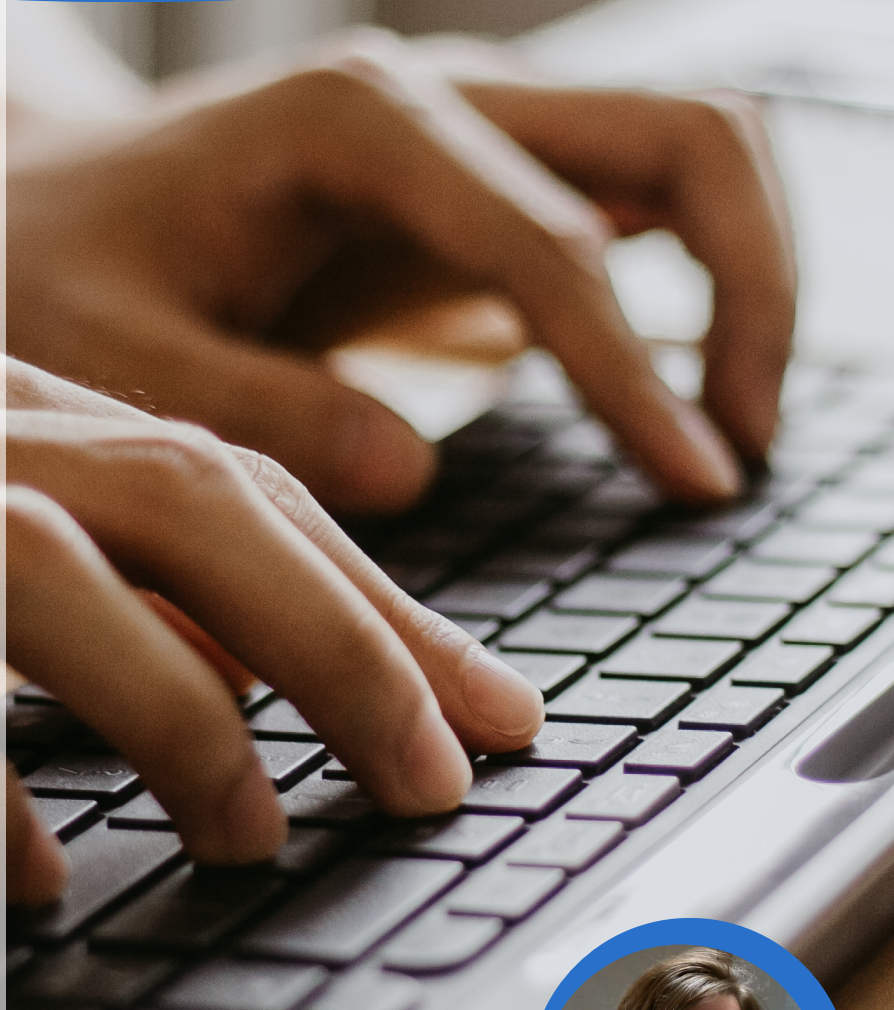
GENERAL OCCUPATIONAL TECHNOLOGY

APPLIED TECHNICAL PROGRAMS

The General Occupational Technology curriculum provides individuals with an opportunity to upgrade skills and to earn an associate degree, diploma, and/or certificate by taking courses suited for individual occupational interests and/or needs.

The curriculum content will be customized for students according to occupational interests and needs. A program of study for each student will be selected from any non-developmental level courses offered by the College.

Graduates will become more effective workers, better qualified for advancements within their field of employment, and become qualified for a wide range of entry-level employment opportunities.



BARNEY GRADY,

Division Chair
Applied Technical
Programs

910-900-4118
bgrady@sampsoncc.edu



DR. SUSAN BAXTER,

Division Chair
Business, Education, and Human
Services Technology

910-900-4094
sbaxter@sampsoncc.edu



BEGIN HERE
go anywhere

910.592.8081 | sampsoncc.edu





Program Checklist

Program Title: General Occupational Technology

Effective Date: Fall 2023

Student Name:

Student ID:

CoDe Transition Courses:

Grade

ENG-002	Transition English	
MAT-003	Transition Math	

Course Prefix	Course Title	Credit Hours	Degree (A55280)	Grade
Fall Semester I				
ACA-122	College Transfer Success	1	X	
Communications: Choose one: COM-110, COM-120, COM-231, ENG-111, ENG-112, ENG-114		3	X	
Humanities /Fine Arts: Choose one: ART-111, ART-114, ART-115, DRA-111, DRA-115, ENG-231, ENG-232, ENG-241, ENG-242, HUM-115, MUS-110, MUS-112, PHI-240, REL-110, REL-211, REL-212, REL-221		3	X	
Social/Behavioral Sciences: Choose one: ECO-251, ECO-252, HIS-111, HIS-112, HIS-121, HIS-131, HIS-132, POL-120, PSY-150, SOC-210, SOC-220, SOC-225		3	X	
Natural Sciences/Math: Choose one: BIO-111, BIO-140, BIO-168, CHM-151, MAT-110, MAT-143, MAT-152, MAT-171		3-4	X	
Total Credit Hours			13-14	
Spring Semester I				
Communications: Choose one: COM-110, COM-120, COM-231, ENG-111, ENG-112, ENG-114		3	X	
Program Elective		3	X	
Program Elective		3	X	
Program Elective		3	X	
Program Elective		3	X	
Total Credit Hours			15	
Summer Semester I				
Program Elective		3	X	
Program Elective		3	X	
Total Credit Hours			6	
Fall Semester II				
Program Elective		3	X	
Program Elective		3	X	
Program Elective		3	X	
Program Elective		3	X	
Program Elective		3	X	
Total Credit Hours			15	
Spring Semester II				
Program Elective		3	X	
Program Elective		3	X	
Program Elective		3	X	
Program Elective		3	X	
Program Elective		3	X	
Total Credit Hours			15	
Dates Awarded:				
Total Credits:		64-65	64-65	

Program Electives: 48 credits from approved prefixes



Complete SCC Application & FAFSA



Meet with an advisor



Register and pay for classes

Admissions:

910.900.4319 | admissions@sampsoncc.edu

Financial Aid:

910.900.4320 | finaid@sampsoncc.edu

Academic Success Center:

910.900.4309

Sampson Community College | 1801 Sunset Ave, Clinton, NC 28328 | 910.592.8081 | www.sampsoncc.edu

Sampson Community College is accredited by the Southern Association of Colleges and Schools Commission on Colleges (SACSCOC) to award the associate degree. Sampson Community College also may award credentials such as certificates and diplomas at approved degree levels. Questions about the accreditation of Sampson Community College may be directed in writing to the Southern Association of Colleges and Schools Commission on Colleges at 1866 Southern Lane, Decatur, GA 30033-4097, by calling (404) 679-4500, or by using information available on SACSCOC's website (www.sacscoc.org).

The Board of Trustees and the Administration of Sampson Community College (SCC) are fully committed to the principles and practice of equal employment and educational opportunities. Accordingly, SCC does not practice or condone discrimination in any form, against students, employees, or applicants on the grounds of race, color, national origin, religion, sex, age, disability, or political affiliation. SCC commits itself to positive action to secure equal opportunity regardless of those characteristics.