



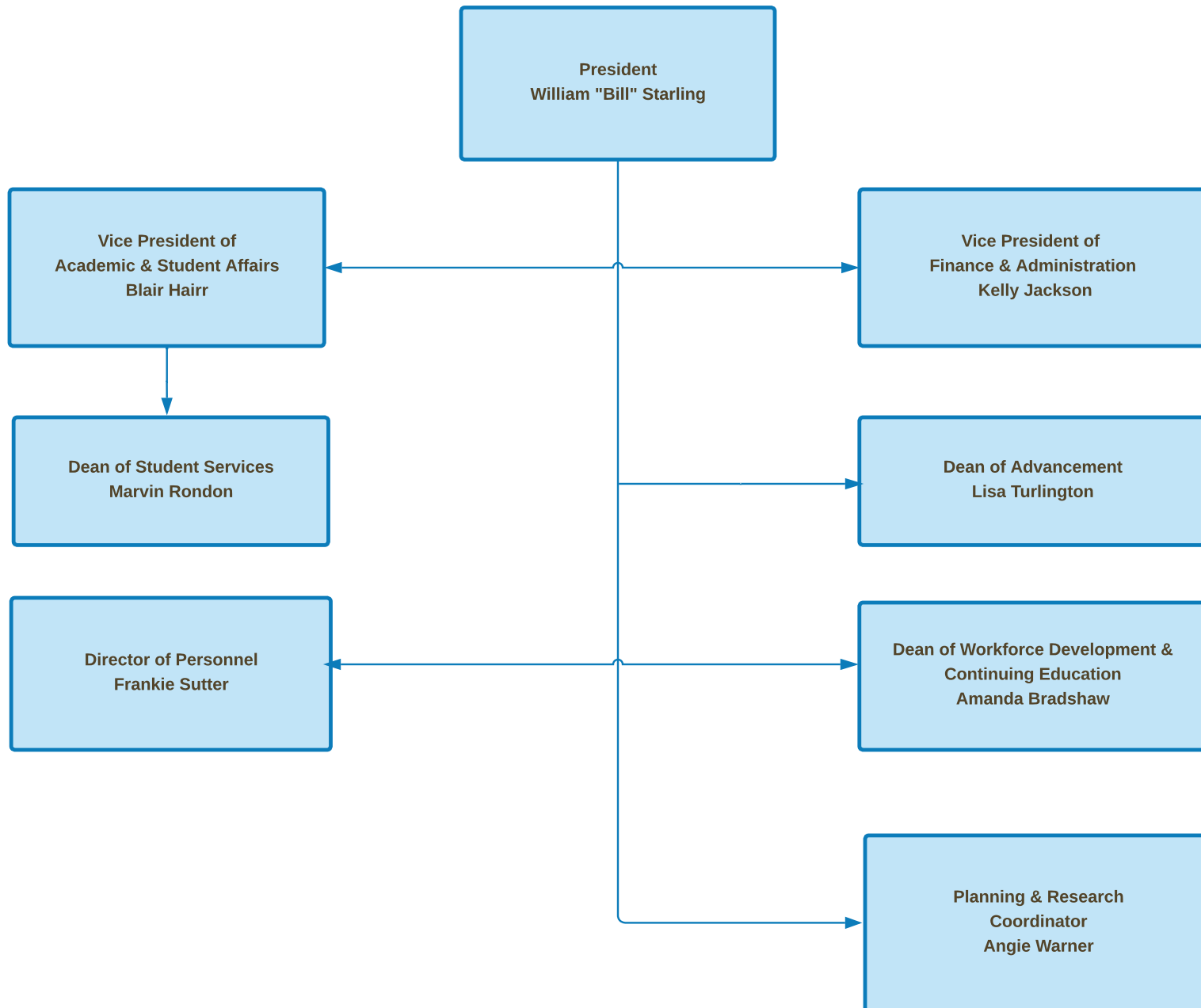
**Sampson Community College  
Organizational Chart**

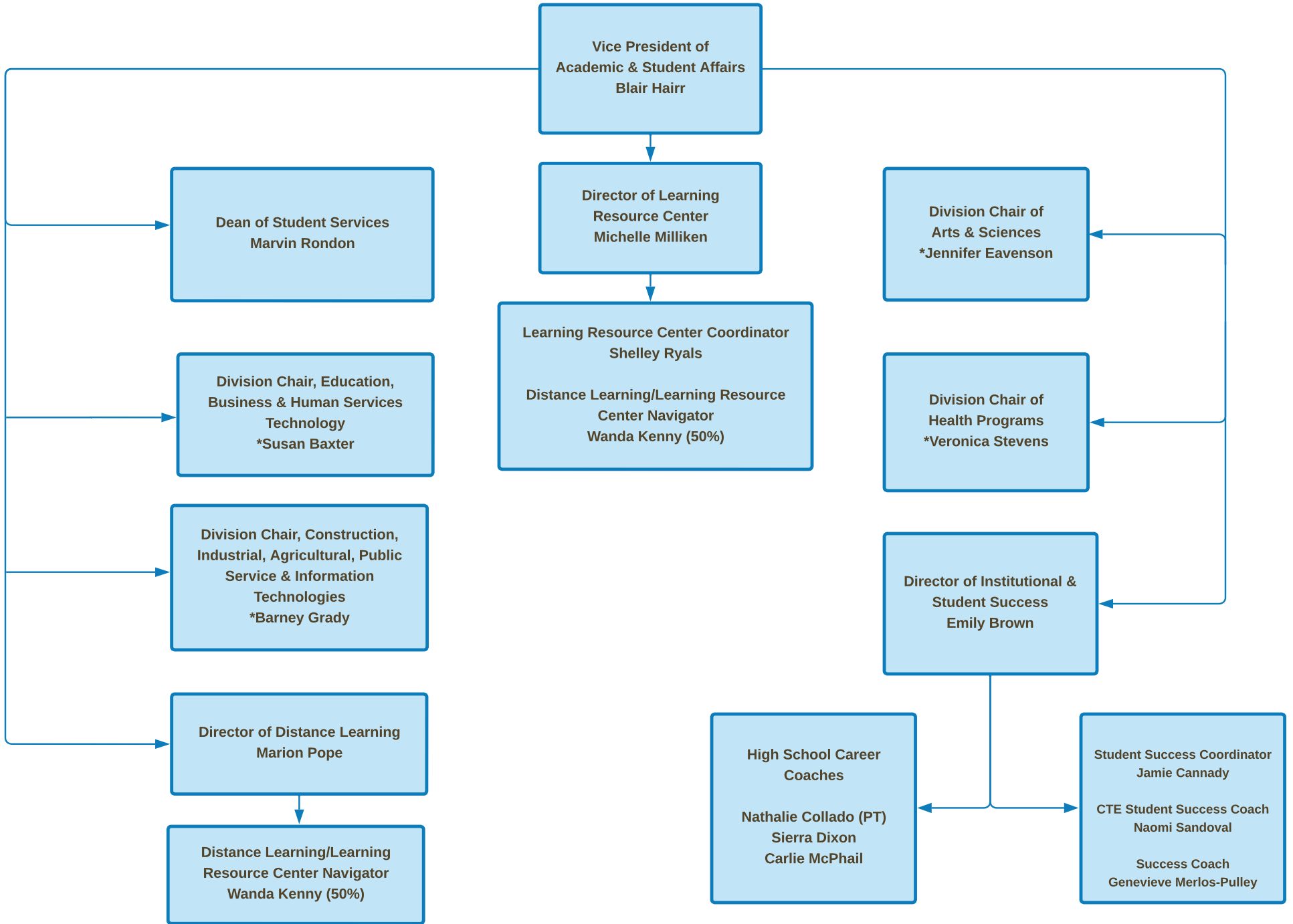
**Board of Trustees**

Theodore Thomas, Chair  
Larinda Haight, Vice-Chair  
Sandra Carroll  
Catherine Ezzell-Joyner  
Barbara Faison  
Chris Fann  
R. Pat Jones  
Vivian Maynor  
Herb Sanderson  
Paul Viser  
C. Michael Warren

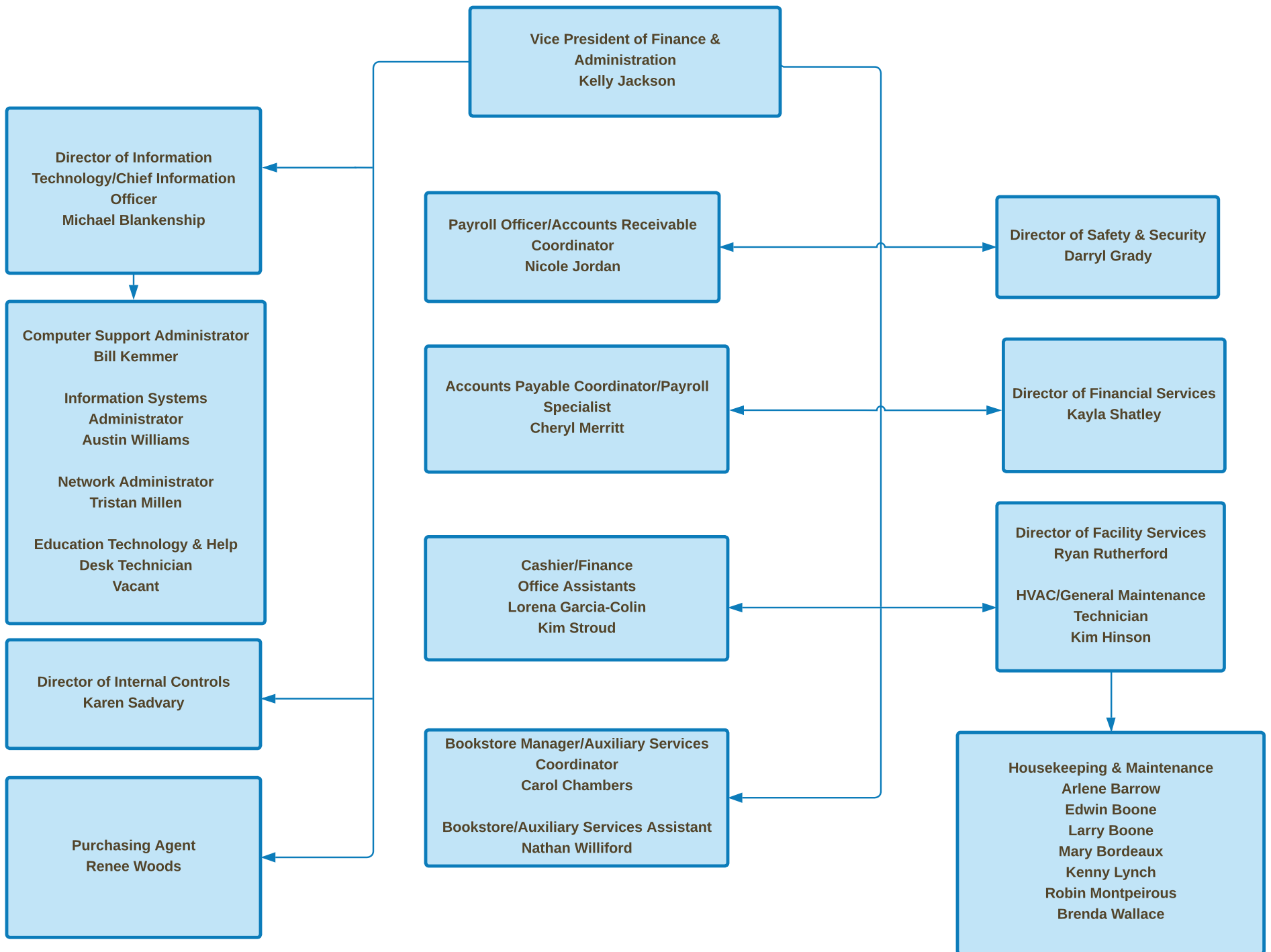
**President**

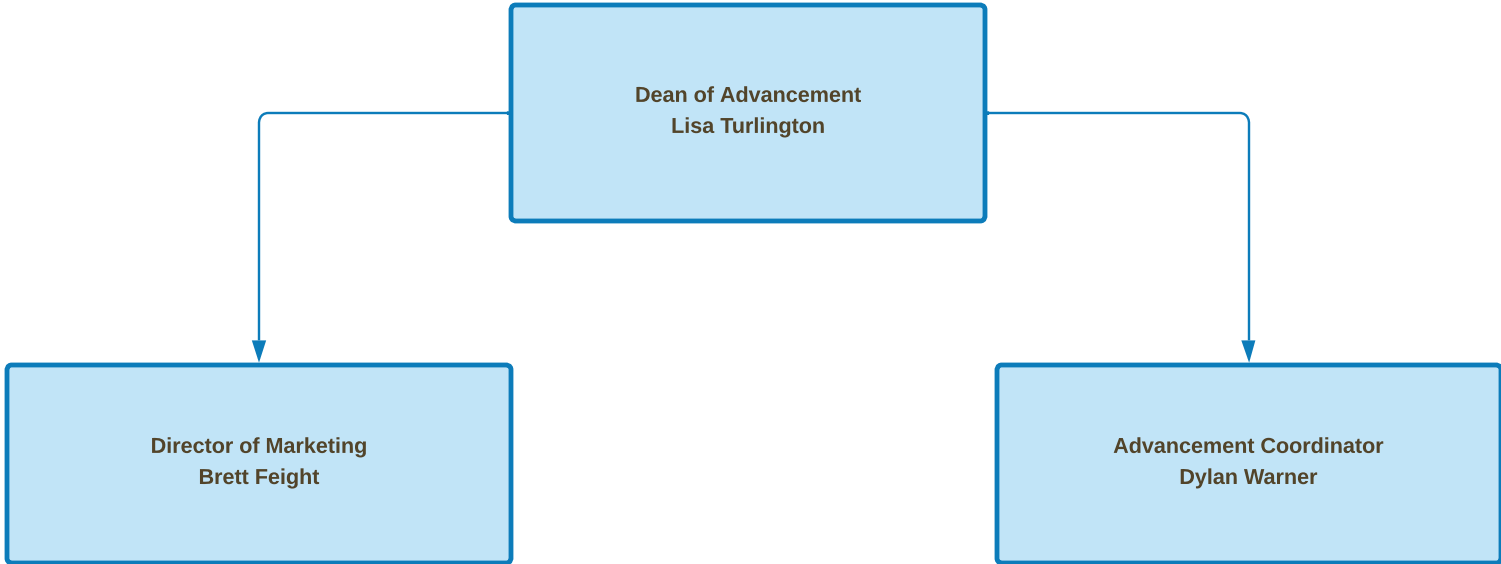
William "Bill" Starling

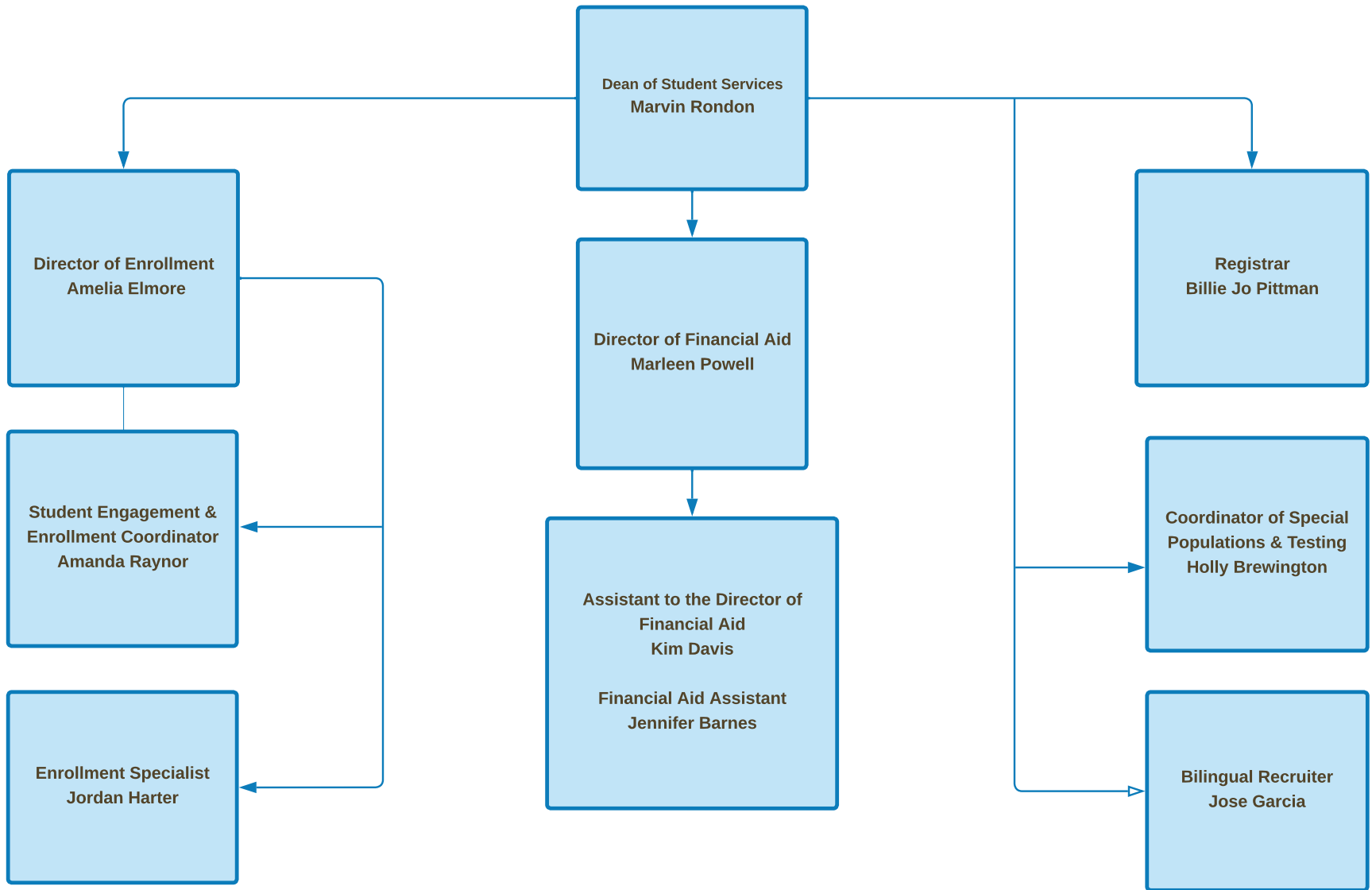


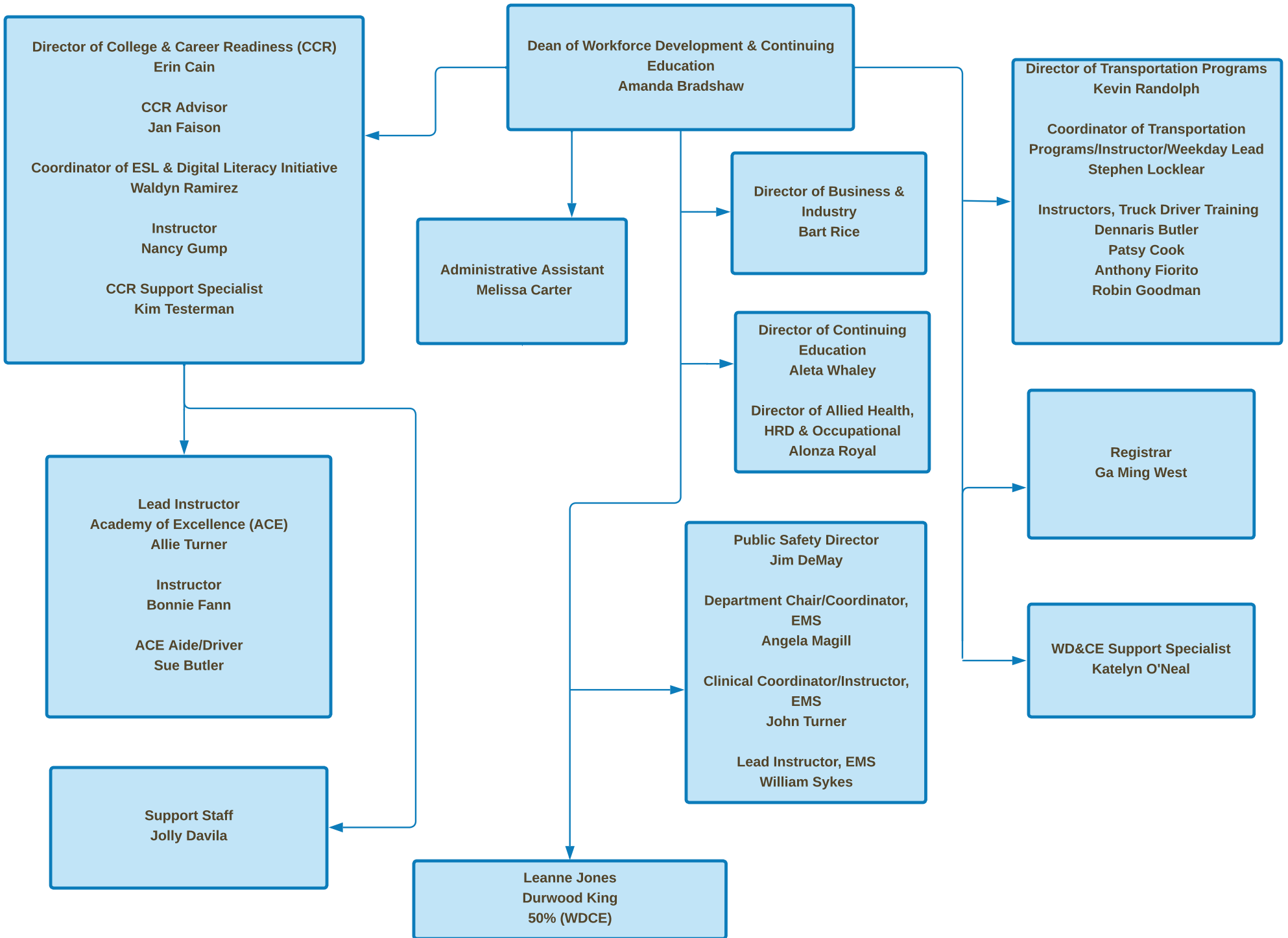


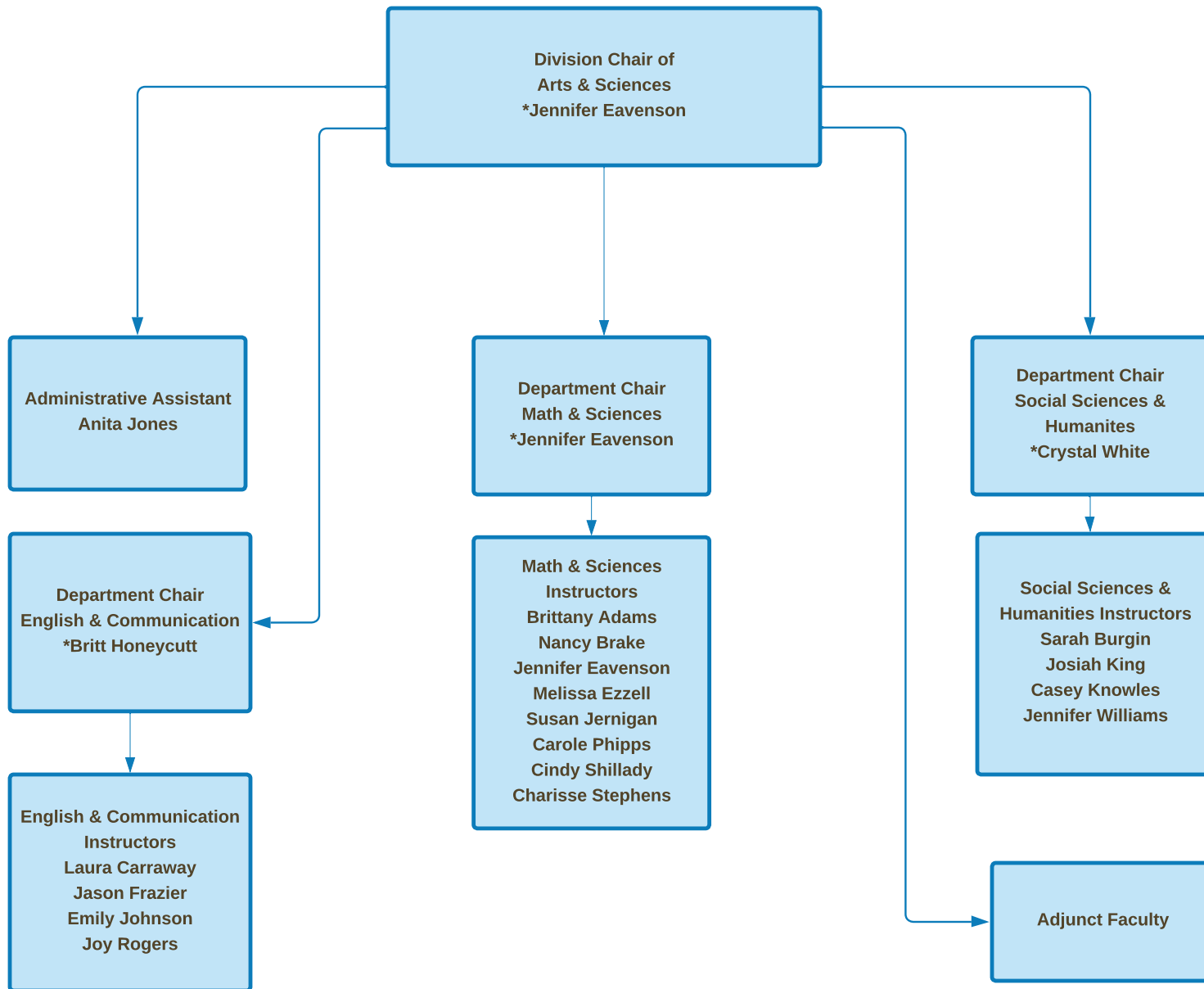
\*Serves as Program Coordinator





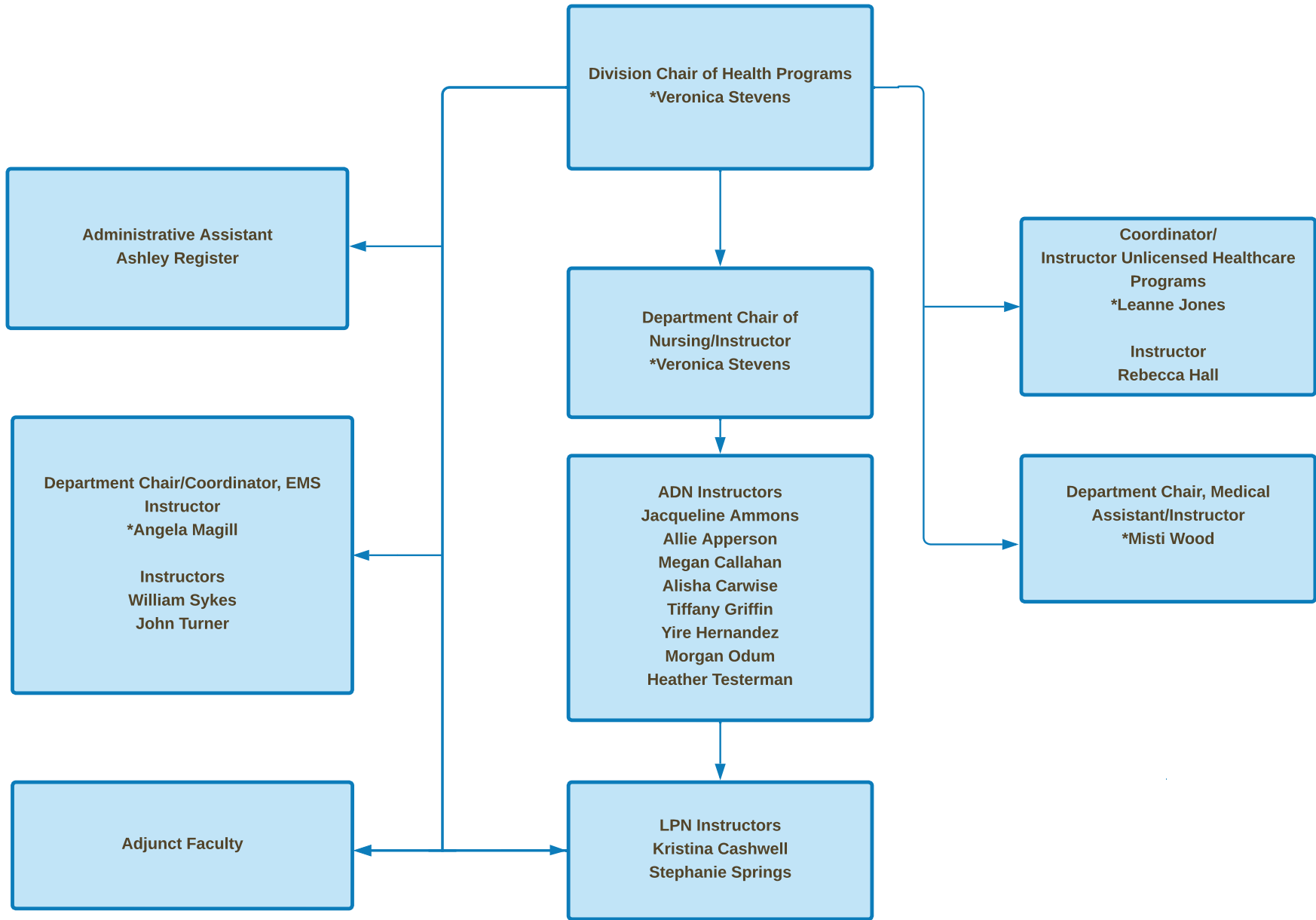




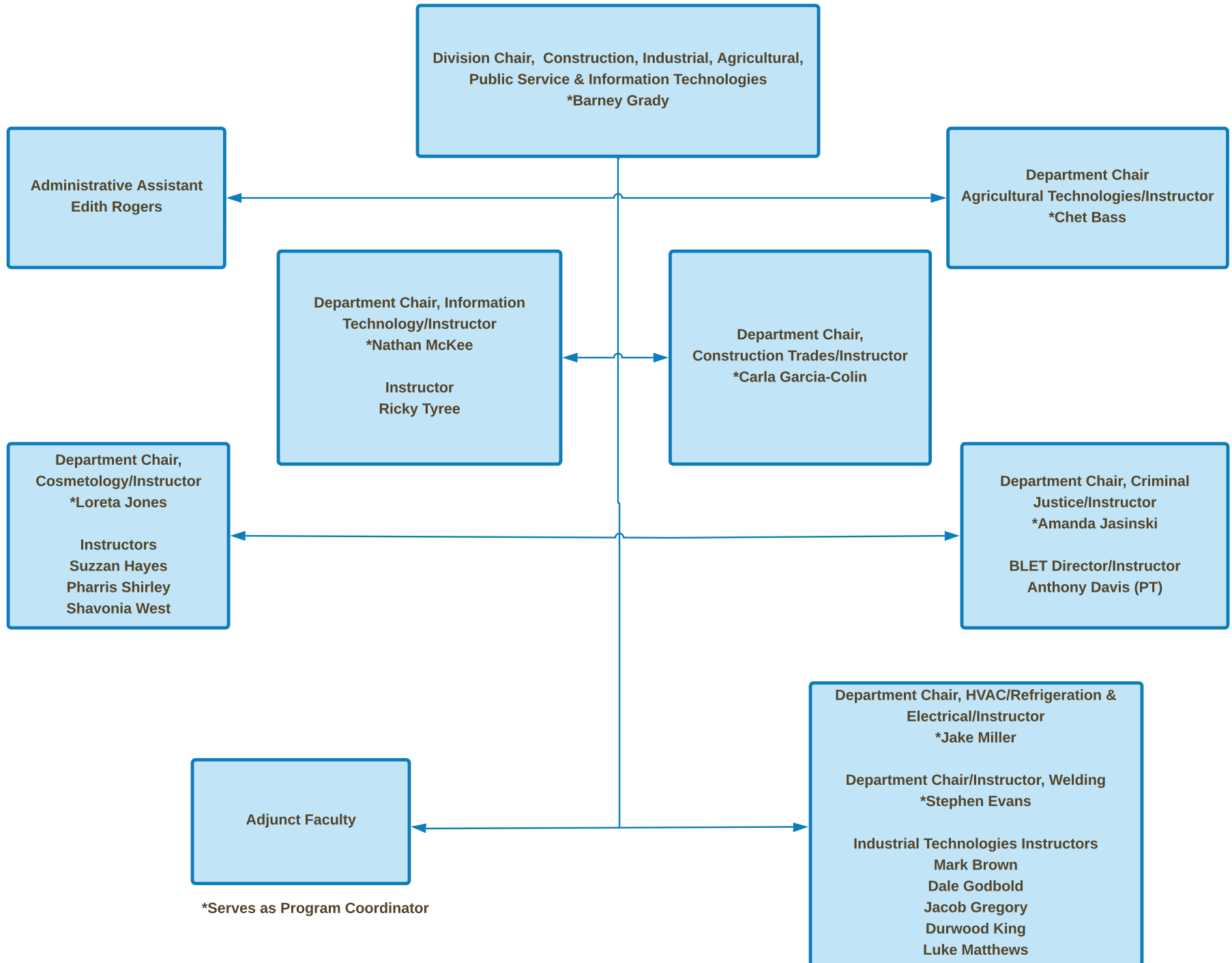


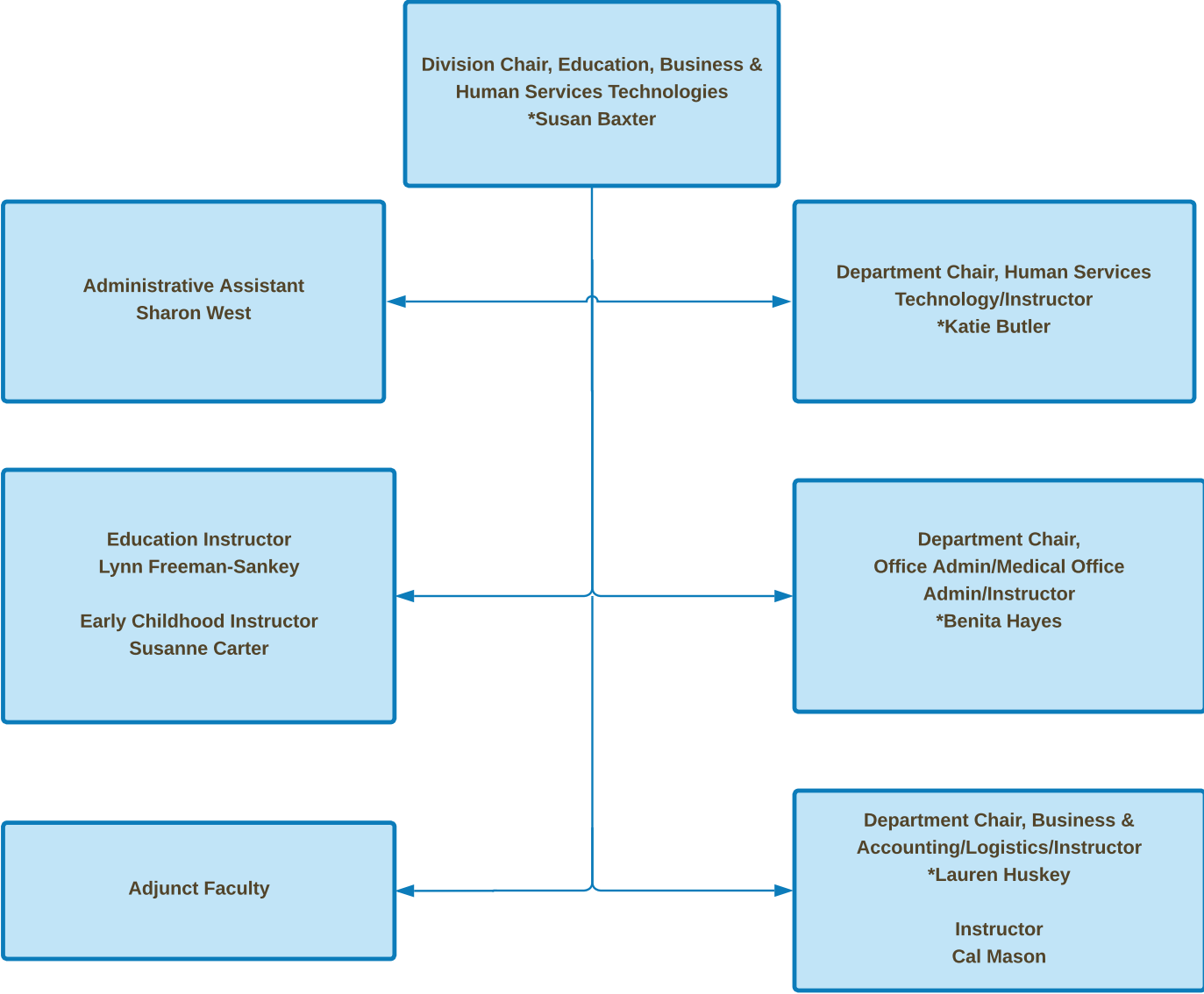
\*Serves as Program Coordinator





\*Serves as Program Coordinator





\*Serves as Program Coordinator